

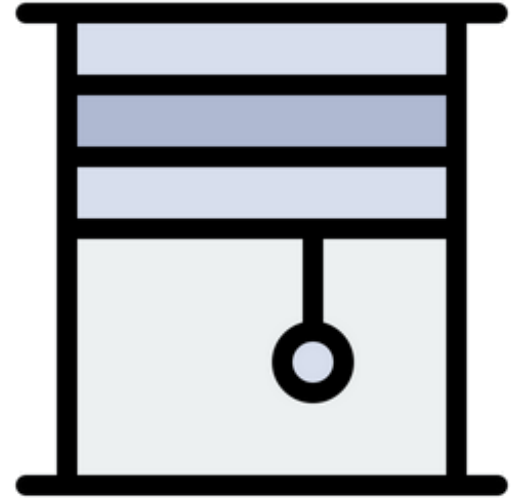


# UTOPIA

Blinds & Shades



# ROLLER BLINDS



LIGHT FILTERING ARETHA

94 IN  
240 CM

# ARETHA

LIGHT FILTERING CONCEPT

The Aretha collection is worked out in a palette of natural colors that perfectly matches contemporary interiors.

◀ INDEX

**COULISSE**  
since 1992



◀ INDEX

ECOLUXURY





LIGHT FILTERING BERLIN & TOULOUSE

# BERLIN & TOULOUSE

98 - 110 IN  
250 - 290 CM

LIGHT FILTERING CONCEPT

The roller blind fabrics in this collection create a balanced atmosphere with a stylish look in any space.

[◀ INDEX](#)

**COULISSE**



SNOW WHITE	BLANC	VANILLA	FLOUR
PEACH	MOTH	TWILL	METAL
LIMESTONE	GREY	BLUE NIGHT	BLACK

[◀ INDEX](#)

ECOLUXURY

14 8-9 / 53 M

**Related Publications**

DOUBLE ROLLER SHADES

[US Custom Shades...](#)

NATURE CONCEPT

[US Custom Shades...](#)

SHEER SOLAR SCREEN 01

[US Custom Shades...](#)

BLACK-OUT

[US Custom](#)



◀ INDEX



◀ INDEX

ECCLUXURY

14 10-11 / 53 H

**Related Publications**







LIGHT FILTERING DURBAN

110 IN  
280 CM

# DURBAN

LIGHT FILTERING CONCEPT

The Durban collection is represented by four soft, neutral shades that emphasize the beauty of nature and contribute to an inviting atmosphere.

**◀ INDEX**

**COULISSE**  
SINCE 1992

LIGHT FILTERING DURBAN

MIST

GRAIN

BARK

CHARCOAL

**◀ INDEX**

ECCLUXURY

H 12-13 / 63 H

**Related Publications**

- DOUBLE ROLLER SHADES

**US Custom Shades...**
- NATURE CONCEPT

**US Custom Shades...**
- SHEER SOLAR SCREEN 01

**US Custom Shades...**
- BLACK-OUT

**US Custom**



LIGHT FILTERING EKO

83 IN  
210 CM

# EKO

LIGHT FILTERING CONCEPT

The collection is worked out in natural tones, ranging from pure ivory to deeper colors derived from shades of brown and black.

[◀ INDEX](#)

LIGHT FILTERING EKO

SNOW WHITE	PEARLED IVORY	PALE KHAKI	SILVER CLOUD
ATMOSPHERE	CINDER	CAVIAR	INDA INK
			LIMESTONE

[◀ INDEX](#)

COULISSE

SINCE 1992

**Related Publications**

DOUBLE ROLLER SHADES

[US Custom Shades...](#)

NATURE CONCEPT

[US Custom Shades...](#)

SHEER SOLAR SCREEN 01

[US Custom Shades...](#)

BLACK-OUT

[US Custom](#)



LIGHT FILTERING MOMBASSA

118 IN  
300 CM

# MOMBASSA

LIGHT FILTERING CONCEPT

The Mombassa collection is worked out in a range of soft color tones that perfectly match modern as well as classic interiors.

**◀ INDEX**

COULISSE

LIGHT FILTERING MOMBASSA

ALSO AVAILABLE IN BLACK-OUT

SNOW	OYSTER	SAND	DUST
INK	ASH	GRAIN	

**◀ INDEX**

ECCLUXURY

**Related Publications**

- DOUBLE ROLLER SHADES

US Custom Shades...
- NATURE CONCEPT

US Custom Shades...
- SHEER SOLAR SCREEN 01

US Custom Shades...
- BLACK-OUT

US Custom





LIGHT FILTERING MUNICH

79 - 118 IN  
200 - 300 CM

# MUNICH

LIGHT FILTERING CONCEPT

This essential collection creates a modern atmosphere and is perfect for larger windows due to the large widths of the fabrics.

[◀ INDEX](#)

**COULISSE**  
since 1992



SNOW WHITE	OYSTER GREY	BLEACHED SAND	MOTH
LIMESTONE	GREY ANTHRACITE	CLAY	DARK SHADOW

[◀ INDEX](#)

ECCLUXURY

**Related Publications**

DOUBLE ROLLER SHADES

**US Custom Shades...**

NATURE CONCEPT

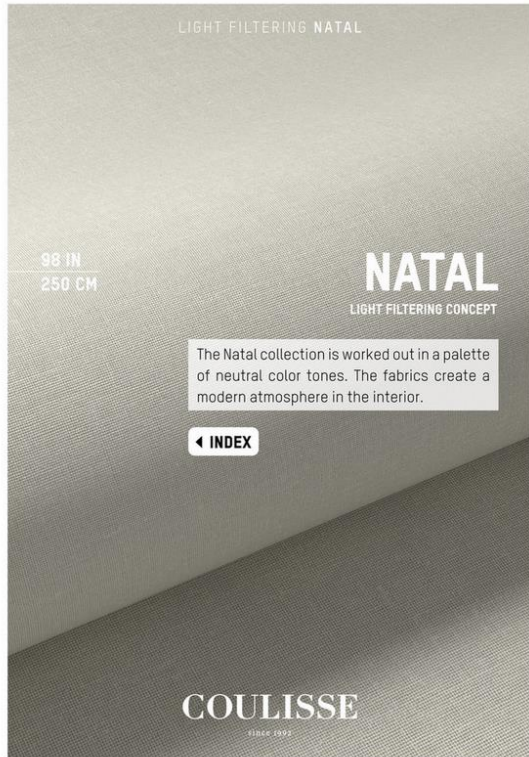
**US Custom Shades...**

SHEER SOLAR SCREEN 01

**US Custom Shades...**

BLACK-OUT

**US Custom**



ECQUXURY

◀ INDEX

14 20-21 / 63 H

Related Publications



US Custom Shades Nature concept

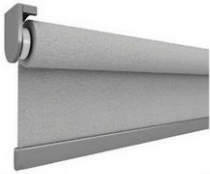


ROLLER COLLECTION SYSTEMS

CHOOSE A CONFIGURATION

**BRACKETS PLASTIC**

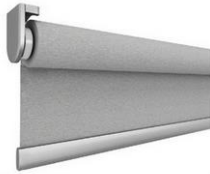
- Brackets covered with plastic caps
- Basic design, no visible screws



- White
- Off White
- Grey Anodized
- Anthracite
- Bronze
- Black

**BRACKETS METAL**

- Brackets covered with metal caps
- Luxurious look, no visible screws



- White
- Chrome
- Stainless Steel
- Natural Aluminium
- Old Brass
- Black Nickel

ROLLER COLLECTION SYSTEMS

**CASSETTE SEMI-OPEN COVERED**

- Elegant rounded cassette, half open
- Textile look with upholstered cassette



- White
- Off White
- Grey Anodized
- Anthracite
- Bronze
- Black

**CASSETTE SQUARE**

- Aesthetic square cassette, fully closed
- Blocks the light, protects the fabric



- White
- Grey Anodized
- Black

**COULISSE**

since 1992

**Related Publications**

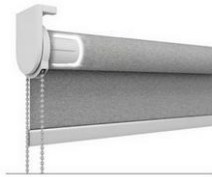


ROLLER COLLECTION SYSTEMS

CHOOSE AN OPERATION

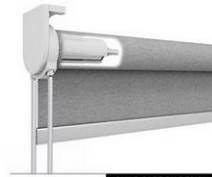
**CHAIN**

- Conventional chain operation
- Chains available in matching colors



**TWIN PULL**

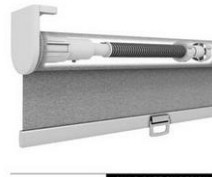
- The child safe alternative to chain operation
- Easy to operate by pulling up and down



CHILD SAFE BY DESIGN

**CORDLESS**

- Cordless spring operation through the bottom rail
- Adjustable rolling speed for smooth operation



CHILD SAFE BY DESIGN

**SMART | MOTIONBLINDS**

- Cable-free rechargeable battery motors and wired motors
- Compatible with smart homes and buildings



CHILD SAFE BY DESIGN

**COULISSE**

since 1992

**Related Publications**





SMART TECHNOLOGY MOTIONBLINDS

SMART TECHNOLOGY MOTIONBLINDS

THREE SMART SOLUTIONS



**MOTORIZATION | PULL ONLY**

Blinds powered by Pull Only motors are the perfect entry to motorization. Child safe and easy to use: a short manual tug automatically sets the blinds in motion.

- Short pull sets blinds in motion
- Program one favorite position
- Set direction of rotation
- Child safe
- Easy to use



**AUTOMATION | BLUETOOTH**

Blinds with Bluetooth motors can be set up in a minute, operated by a smartphone and automated with preset timers, without the need for a bridge, registration or a remote control.

- Scan to set up in a minute
- Control by app in Bluetooth range (10m)
- Automate with timers (autopilot mode)
- Set direction of rotation
- Adjust end positions



**SMART HOME | BLUETOOTH & BRIDGE**

Add a Wi-Fi bridge to connect MotionBlinds to Google, Alexa, SmartThings, Siri and many others to integrate your blinds into your smart home and operate them away from home by a smartphone.

- Connect to smart home systems
- Control by app away from home
- Create rooms & scenes
- Automate blinds with timers
- Automate to sunrise/sunset (location based)



MOTIONBLINDS

**Related Publications**





SMART TECHNOLOGY MOTIONBLINDS

SMART TECHNOLOGY MOTIONBLINDS

MOTIONBLINDS MOTORS

Motor	Type	Power supply	Product type	Pull control	Remote control	App control	Smart home	Switch control	Bluetooth	433MHz
CM-02	0.65Nm Tubular motor	Integrated battery USB rechargeable								
CM-03	1.1Nm Tubular motor	Integrated battery USB-C rechargeable								
CM-05	2.0Nm Tubular motor	Integrated battery USB-C rechargeable								
CM-06	6.0Nm Tubular motor	Integrated battery USB-C rechargeable								
CM-08	0.6Nm Honeycomb motor	Integrated battery USB-C rechargeable								
CM-36	1.2Nm Curtain motor	Integrated battery USB-C rechargeable								
CM-40	2x 0.3Nm Vertical motor	USB-C rechargeable battery / 12V transformer								
CM-09-C120	8.0Nm Tubular motor	Wired 120V								
CM-09-QC120	4.0Nm Tubular motor	Wired 120V								
CM-10-QC120	8.0Nm Tubular motor	Wired 120V								
CM-35-120	1.0Nm Curtain motor	Wired 120V								
CM-09-MC120	6.0Nm Tubular motor	Wired 120V								
CM-09-QMC120	4.0Nm Tubular motor	Wired 120V								
CM-10-QMC120	8.0Nm Tubular motor	Wired 120V								

• MotionBlinds: smart home integration and control away from home by app requires installation of the MotionBlinds Wi-Fi Bridge.  
 • MotionBlinds: Bluetooth / USB-C versions available in the course of 2022.

Related Publications





SMART TECHNOLOGY MOTIONBLINDS

SMART TECHNOLOGY MOTIONBLINDS

**PULL CONTROLS**



Pull Tassel



Pull Wand

**REMOTE CONTROLS**



Hand-held Remote



4 Channel Wall Remote



1 Channel Pull Remote



4 Channel Table Remote

**CONNECTIVITY**



Wi-Fi Bridge



Domotica Box

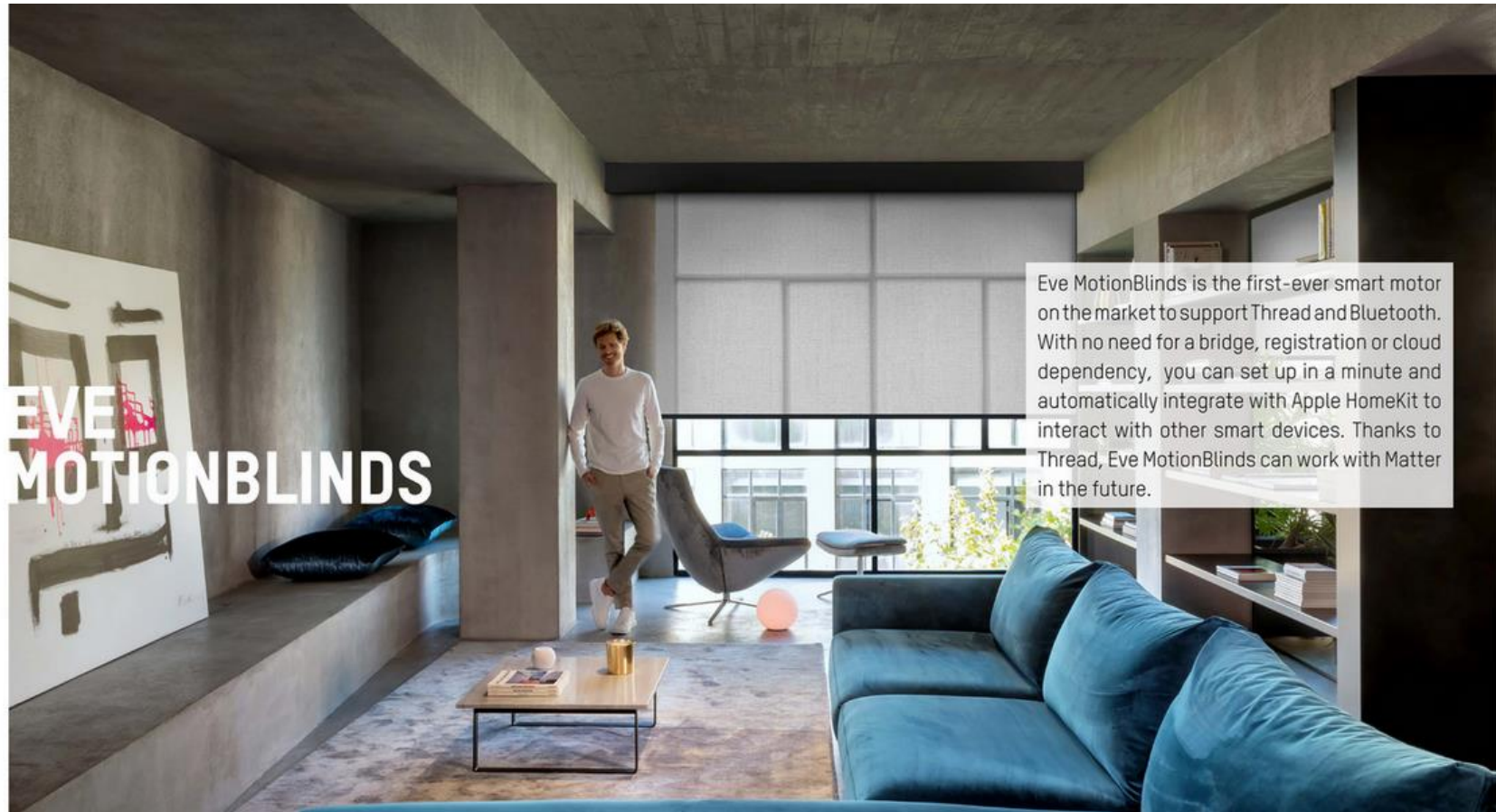
**JUST A SIMPLE PULL**

Pull control, a special feature of MotionBlinds, is the perfect addition to smart controls because it requires nothing: no connectivity, no smartphone, no remote control. A short manual pull on the operating tassel, wand or cord automatically sets the blind in motion.

MOTIONBLINDS

**Related Publications**





# EVE MOTIONBLINDS

Eve MotionBlinds is the first-ever smart motor on the market to support Thread and Bluetooth. With no need for a bridge, registration or cloud dependency, you can set up in a minute and automatically integrate with Apple HomeKit to interact with other smart devices. Thanks to Thread, Eve MotionBlinds can work with Matter in the future.

[utopiablindsandshades.com](http://utopiablindsandshades.com)

Necesita cortinas? Llámenos [\(+1\) 201-719-3488](tel:+12017193488)

Sunrise Florida **Florida, 890012 US**

[info@utopiablindsandshades.com](mailto:info@utopiablindsandshades.com)